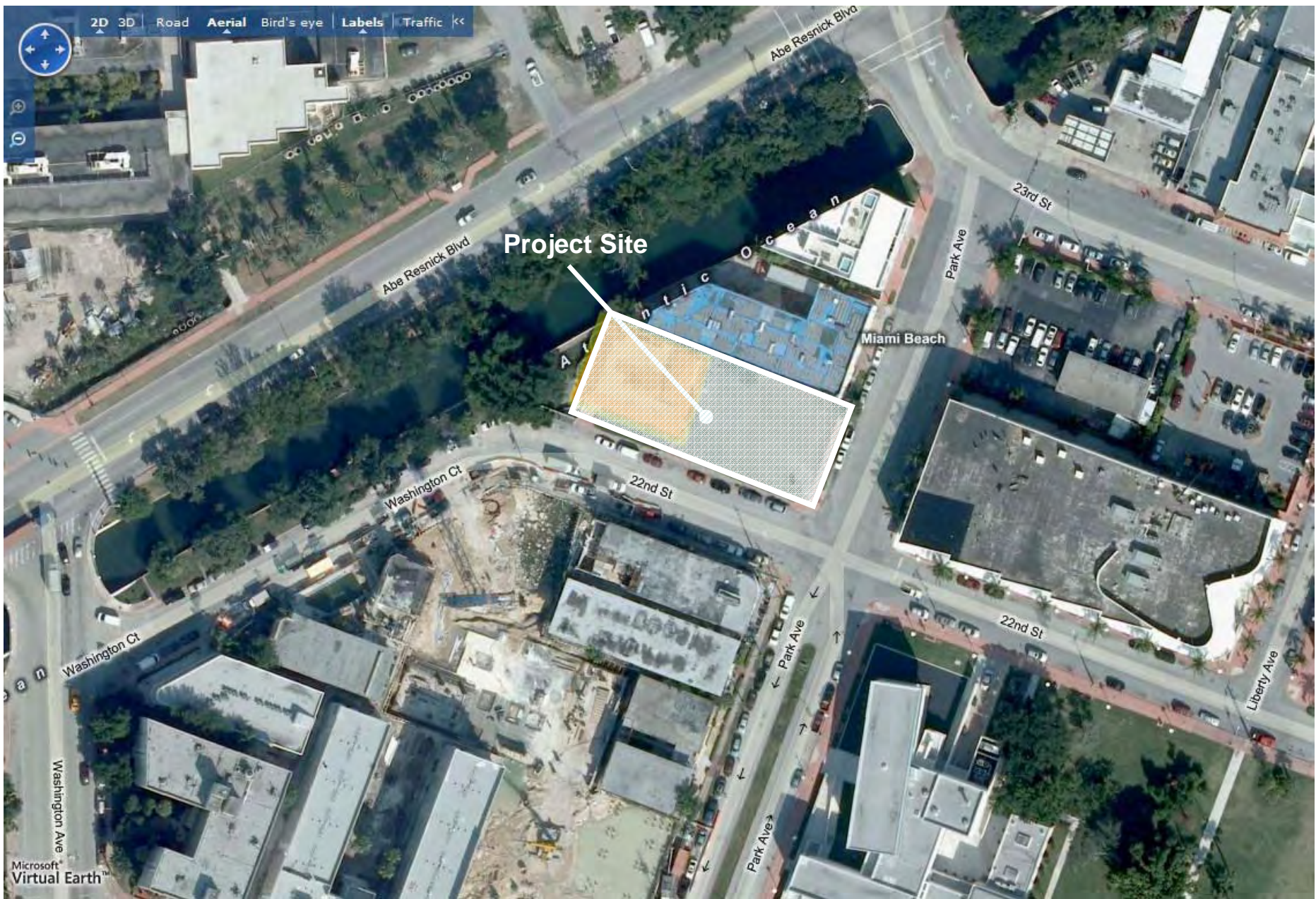


Existing site / 2008

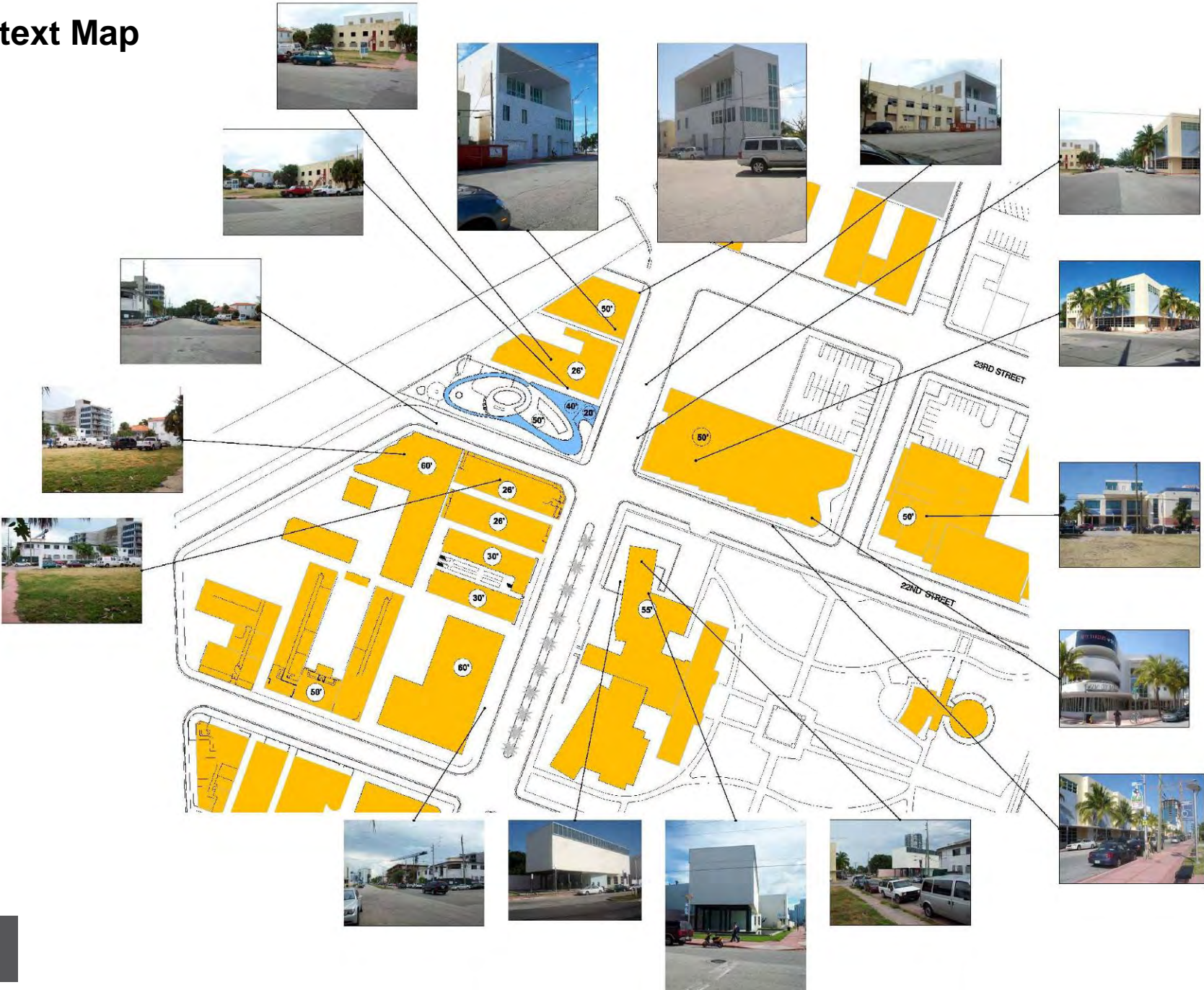


*Excerpts from Shulman + Associates' Presentation to the
COLLINS PARK NEIGHBORHOOD ASSOCIATION
Preliminary Concept Design of 427 22 Street-2206 Park Avenue
October 21, 2008*





Context Map



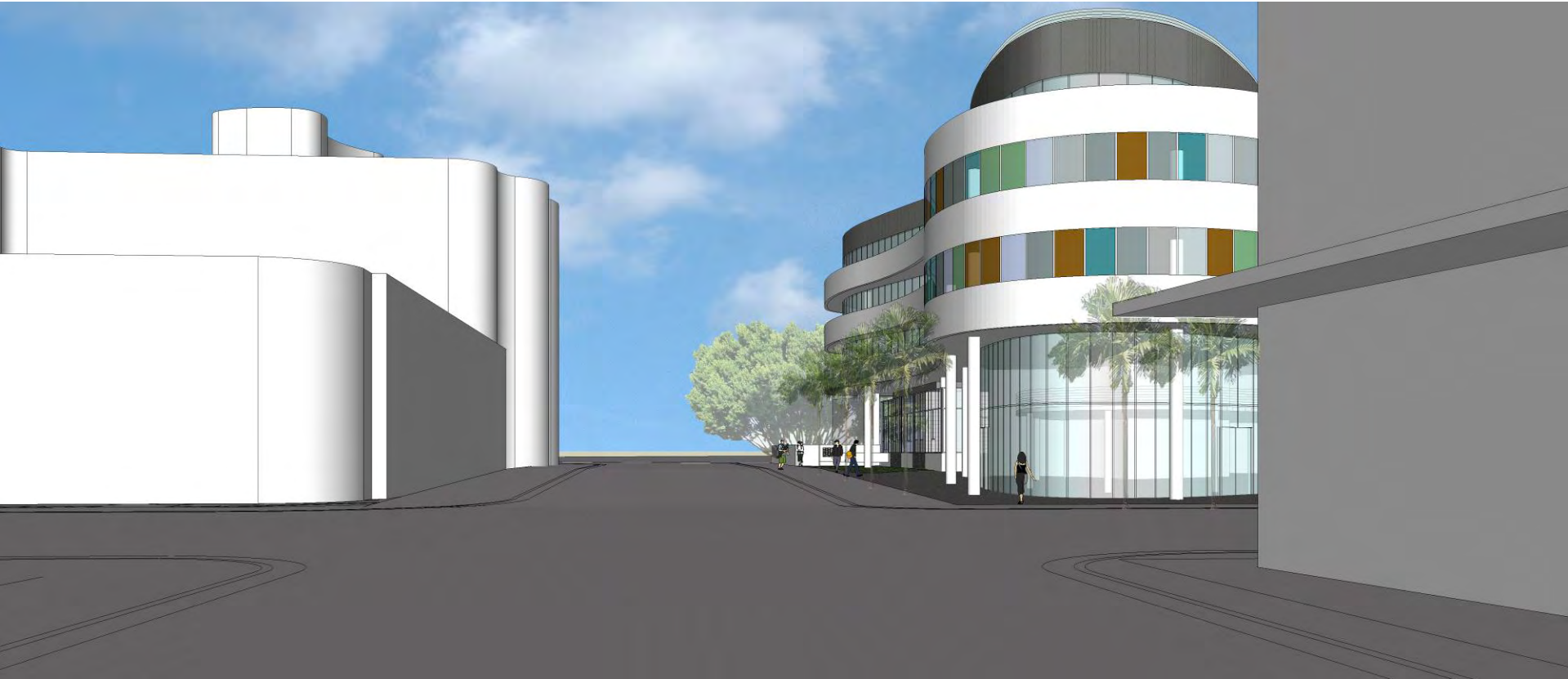
Preliminary Concept Design:
View from Bass Museum



Preliminary Concept Design:
View from across 22nd Street



Preliminary Concept Design:
Context View from SE



Preliminary Concept Design:
**View from Corner of 22nd Street &
Washington Court**



Preliminary Concept Design:
View from Across Canal



Preliminary Concept Design:

Linear Park

